

# Featherstone Wood Primary School Newsletter



29<sup>th</sup> April, 2016

Dear Parents and Carers,

## Dogs on School Site

Please may I remind you that dogs should not be brought onto the school site. It would also be appreciated if they were not tied up outside as the pathway is very narrow and can be frightening for adults and children that are wary of dogs. Thank you for your assistance.

## Attendance Trophy

The winners of this week's Attendance Trophy are, once again, Year 6 with 98.64%. Well done everyone.



## Star Learners

We are very proud of our Star Learners who, this week are:-

Reception - Kyla Dore  
Year 1 - Zara Camp  
Year 2 - Billy Mallam  
Year 3 - Lauren Milton  
Year 6 - Chloë Driver

## Sports Star of the Week

The winner of this week's 'Sports Star' award is Bailey Reeves, Year 3. Bailey was awarded the trophy for his perfect behaviour and concentration. When Bailey started running he felt he was unable to do it - with his perseverance he has now perfected his running action. Well done Bailey!



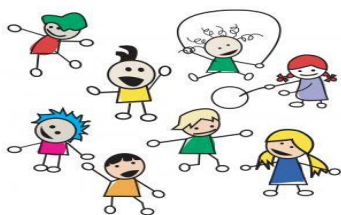
## St. Hilda's Church



On 28<sup>th</sup> to 30<sup>th</sup> May St. Hilda's Church in Hydean Way, is holding a flower festival. Our school is making a floral arrangement so why not pop along and have a look. There will also be a musical performance and marquee serving cream teas and cakes. The event will take place between 12.30 p.m. and 5.00 p.m.

On the same dates in The Hyde precinct there will be live music, international street dance, various stalls, children's entertainment, bouncy castle, workshops and

competitions. These events will take place between 12.30 p.m. and 5.00 p.m. also.



### **Dates for your Diary**

**2<sup>nd</sup> May - Bank Holiday**

9<sup>th</sup> May - SAT's week

**30<sup>th</sup> May - Bank Holiday**

**31<sup>st</sup> May to 3<sup>rd</sup> June - Half Term**

**6<sup>th</sup> June - Inset Day**

13<sup>th</sup> June - Phonics Check Week

20<sup>th</sup> June - New to Reception Meeting

22<sup>nd</sup> - 24<sup>th</sup> June - Year 5& 6 PGL

27<sup>th</sup> June - New to Nursery Meeting

28<sup>th</sup> June - Reception Taster Lunch

5<sup>th</sup> July - KS2 play to school

6<sup>th</sup> July - KS2 play - 1.30 and 6.00 p.m.

8<sup>th</sup> July - Sports Day & Proms

9<sup>th</sup> July - Summer Fair

14<sup>th</sup> July - Transition Day/Meet New Teacher

**22<sup>nd</sup> July - Summer Term finishes 2.00 pm**

**25<sup>th</sup> July - Occasional Day**

### **Diary Dates 2016/2017**

1<sup>st</sup> September - Inset Day

2<sup>nd</sup> September - Inset Day

5<sup>th</sup> September - School resumes

24<sup>th</sup> to 28<sup>th</sup> October - Half Term

20<sup>th</sup> December - School finishes at 2.00 pm

21<sup>st</sup> December - Inset Day

5<sup>th</sup> January - School resumes

13<sup>th</sup> to 17<sup>th</sup> February - Half Term

30<sup>th</sup> March - 17<sup>th</sup> April - Easter break

31<sup>st</sup> March - Inset Day

18<sup>th</sup> April - School resumes

29<sup>th</sup> May to 2<sup>nd</sup> June - Half Term

20<sup>th</sup> July - School finishes 2.00 pm

21<sup>st</sup> July - Inset Day

24<sup>th</sup> July - Occasional Day

*Louise Shuttleworth*  
**Headteacher**